

JOHN BRAY & SONS



86b Marina
, St. Leonards-On-Sea, TN38 0BL

£1,400 Per Month



86b Marina

, St. Leonards-On-Sea, TN38 0BL

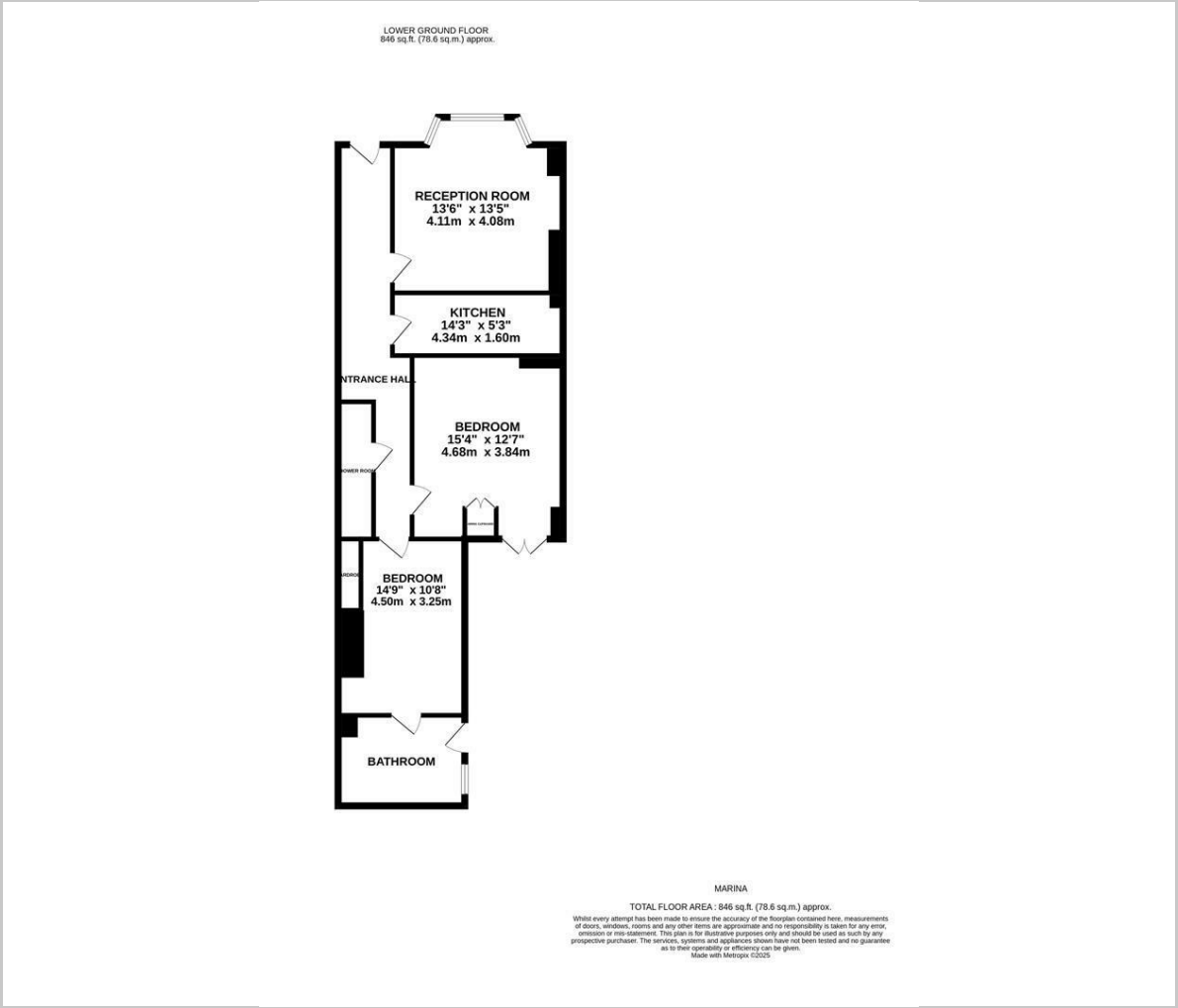
The property: A characterful and exceptionally well presented two double bedroom apartment positioned on St. Leonards seafront with private entrance and private courtyard garden. Situated on the lower ground of this period building being presented to an immaculate standard throughout having recently undergone refurbishments. This rarely available property is offered on a short-term unfurnished basis and comprises large reception room with original parquet flooring, fitted kitchen with bespoke units housing appliances, spacious master bedroom with patio doors leading to courtyard garden, separate WC with shower room, second double bedroom and large family bathroom. Available immediately.

The location: occupying an unrivalled location on the seafront, adjacent to St. Leonards beach. It is positioned within walking distance to nearby shops and restaurants at Marine Court, Grand Parade and central St. Leonards. St. Leonards offers a collection of independent stores, antique shops, galleries cafes and restaurants along with a mainline railway station with connections to London.





Floor Plan



Viewing

Please contact our John Bray Hastings Sales Office on 01424 421544 if you wish to arrange a viewing appointment for this property or require further information.

These particulars, whilst believed to be accurate are set out as a general outline only for guidance and do not constitute any part of an offer or contract. Intending purchasers should not rely on them as statements of representation of fact, but must satisfy themselves by inspection or otherwise as to their accuracy. No person in this firms employment has the authority to make or give any representation or warranty in respect of the property.

72 High Street, Hasting, East Sussex, TN34 3EL
Tel: 01424 421544 Email: enquiries@johnbrayandsons.com www.johnbrayandsons.com

Area Map



Energy Efficiency Graph

